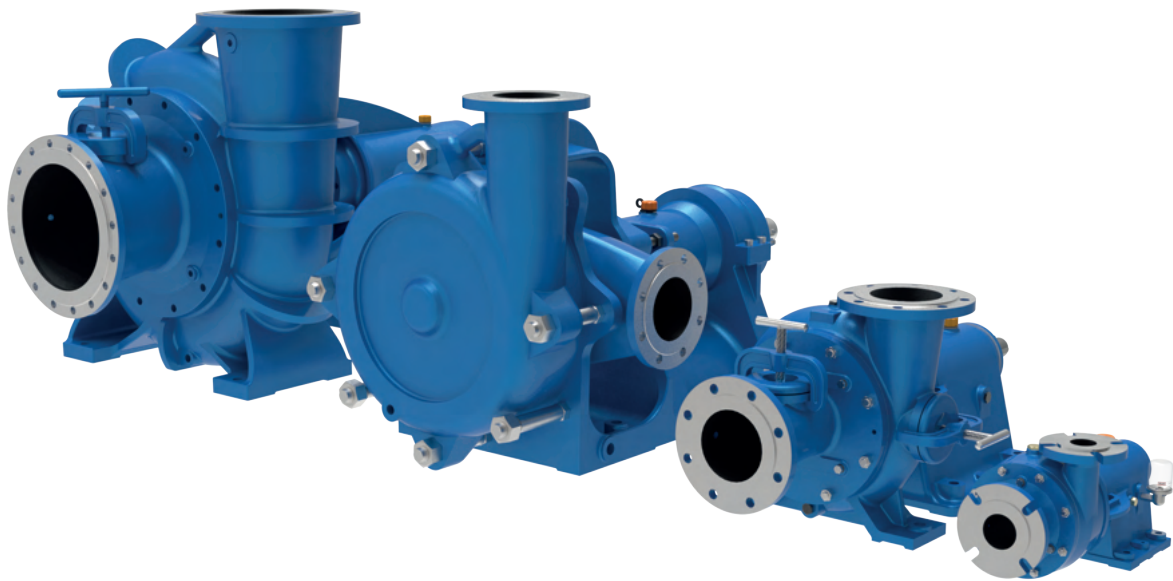


2026

# Ateliers de Construction de Herstal

**Pumps for Heavy liquids**  
**Mining & Metallurgy**  
**AgriFood**





En Hayeneux ,148  
B4040 Herstal Belgium  
Tel.: +32 (0) 4 264 08 40  
E-mail : info-pompe@ac-herstal.com



---

## Our Services

We have been a centrifugal pumps manufacturer offering the most efficient solutions to our clients since the early 1900s. We have developed partnerships with pump suppliers that complement our range. We offer a complete service, from assistance in choosing the pump to the installation of motor-pump units. All our pumps are tested on our test bench. We also provide maintenance and repair services on-site and in our workshop

### New Pumps

We provide a wide range of new pumps:

Single- and multi-stage centrifugal pumps for water and hydrocarbons.

Single-stage pumps for abrasive-laden liquids.

Submersible pumps for wells.

Submersible pumps for wastewater.

Marine Diesel engine cooling pumps.

We have numerous references in the fields of water distribution (SWDE, IWM, VMW...), waste water pumping (AIDE, Intradel...), industry (Cockerill Sambre, Tessenderlo, Carmeuse...), Diesel engine construction (SEMT Pielstick, Wartsila), and the palm oil industry (Sipef, De Smet, Unilever...).

### Spare Parts

We guarantee the supply of spare pump parts to our customers. For a large part of our range, we maintain critical parts in stock.

### Retro-engineering & 3D Printing

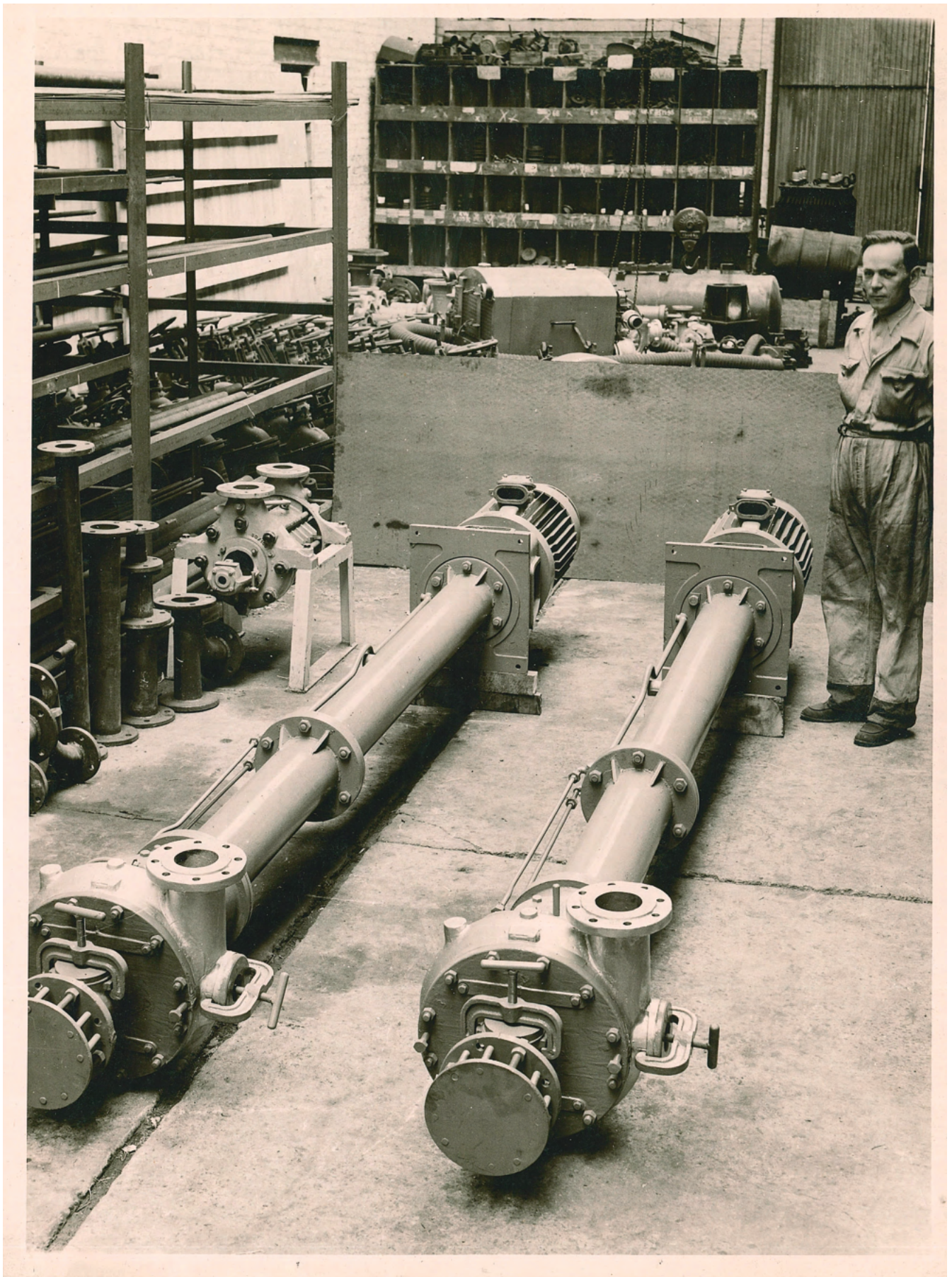
Parts that are too old or require rapid repair can be produced via machining in our facilities, 3D printing (Aluminium, 316L, Titanium TC4, Monel 400), or lost-wax casting.

### Maintenance and Repair for All Brands

We maintain and repair pumps of all makes. We offer a complete service:

Preventive maintenance for pumps in operation, with the possibility of multi-year contracts.

Pump repair (on-site dismantling, diagnosis, workshop repair, test bench testing, re-installation, and warranty). Our philosophy is to work in partnership with the client to repair pumps at the right price. We are open to negotiating repair contracts for pump fleets. Our machining workshop allows us to produce parts within the shortest timeframes in case of emergency.



RCN 150k - 1950

# RC / RCR Pump Applications & CAL

RC/RCR and CAL pumps have been particularly suited for heavy-duty liquids since 1958.

These pumps are recommended for:

- The mining industry (limestone, gravel pits, etc.).
- Metallurgy.
- Wastewater.
- Bottom ash pumping.
- The agrifood industry (Oils & pastes, sugar mill cossettes & sludge).
- Brewery worts.
- "Slurries" (abrasives, sludges, brines, manure, and paper pulp).



RC/RCR and CAL pumps are available in Chromium cast iron or GS60 Ductile iron.


Internal and/or External Elastomer Coating:

Metaline 785: Protection against wear, erosion, and cavitation. Max temp: +120°C (dry) or +60°C (wet). Min temp: -50°C. Wet certification (BS 6920, AS/NZS 4020:2005). Free from isocyanates, polyurea, and silicone. FOOD SAFE

Colours : RAL 1011, 1021, 3020, 5017, 6026, 7015, 7035, 9017



Internal and/or External Ceramic Coating:

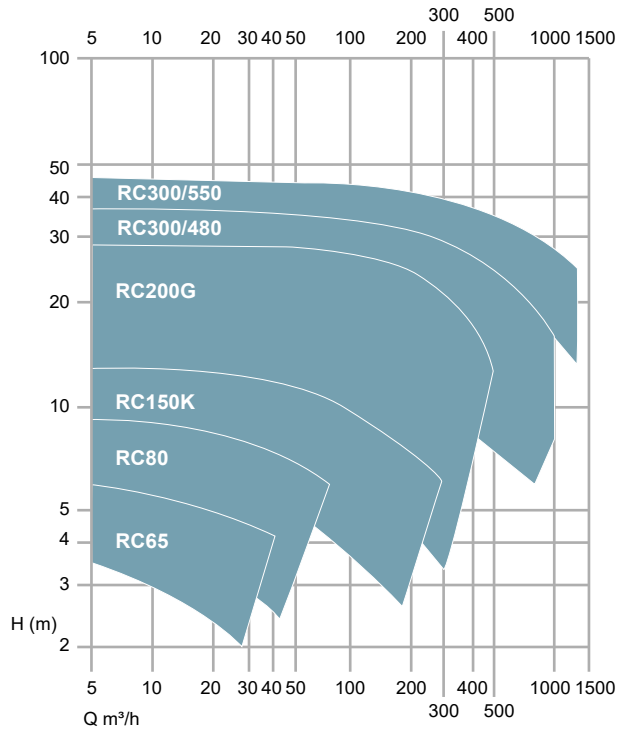
Belzona 1321: Protection against wear and erosion. Max temp: +220°C (dry) or +60°C (wet). Steam up to 210°C. Resistant to inorganic acids, alkalis up to 20%, hydrocarbons, mineral and lubricating oils. 

Surface treatments are also available (Tannic acid, phosphoric acid, tungsten carbide).

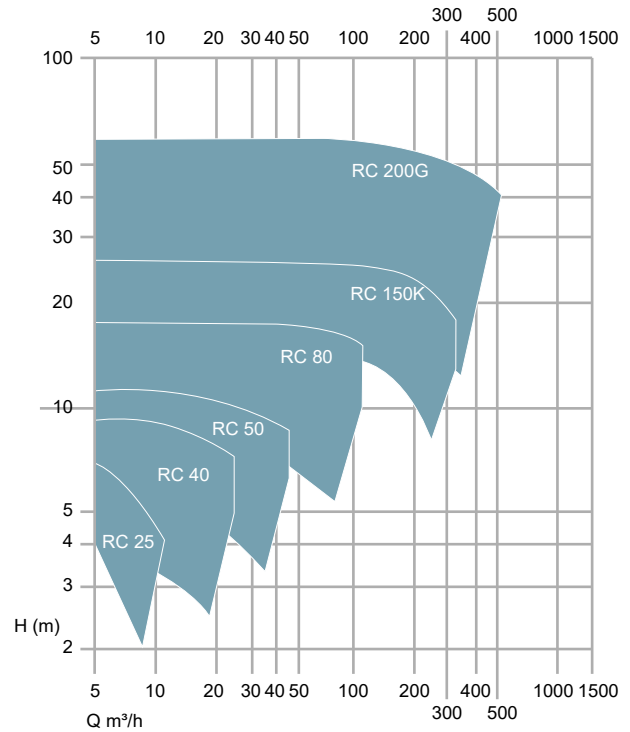


# RC / RCR Range

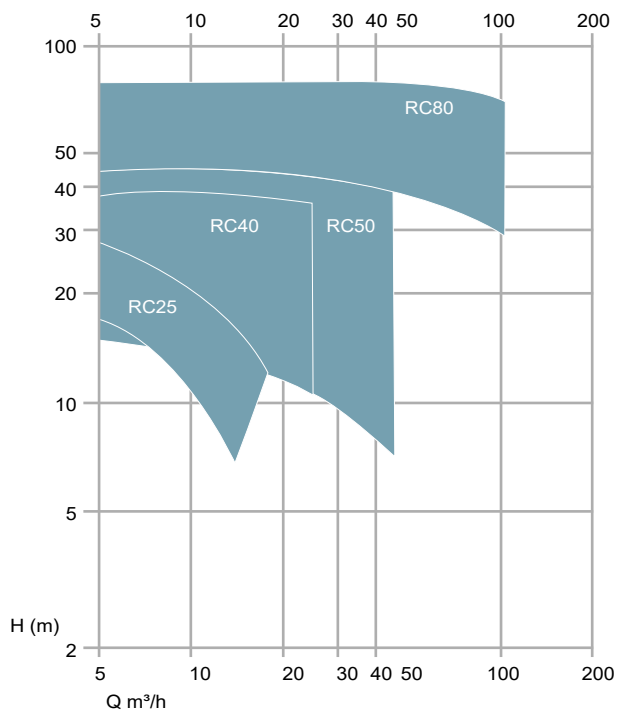
**970 RPM**



**1450 RPM**



**2850 RPM**



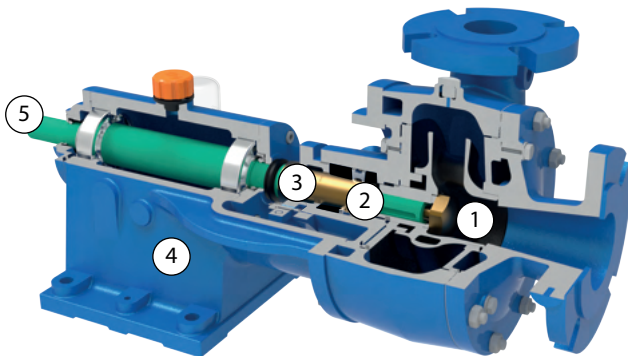
The range consists of the following variants:  
25, 40, 50, 80, 150K, 200G, 300/480 & 300/550.

Available with gland packing or mechanical seal.

RC/RCR pumps operate over three optimal ranges: 970, 1450, and up to a maximum of 2850 RPM for the smallest models.

## RC / RCR Range - Best Seller

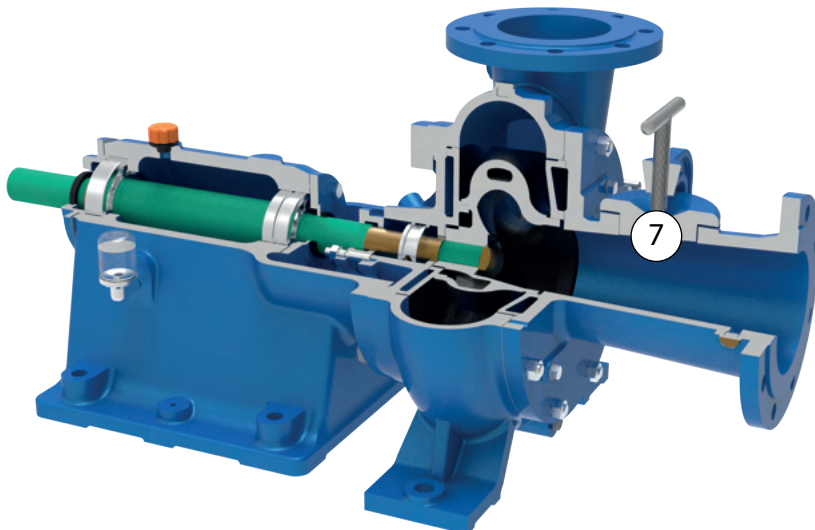
### RC/R 50



- ① Double-channel impeller
  - Chromium Cast iron «Rudax»  
*Alloy 3.5/30 - Iron 50/54 RC 400 Brinell*
- ② Sealing
  - Gland Packing
  - Mechanical seal
- ③ Quick adjustment
- ④ Cast iron bearing housing
- ⑤ Coupling
  - Pulley/V-belt drive
  - Direct coupling via Flex-ring

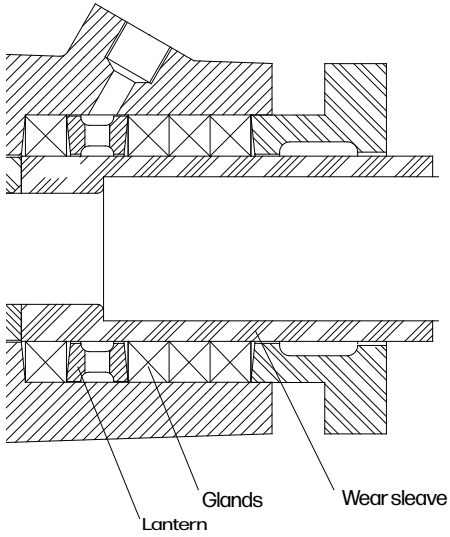
### RC150KL

- ⑦ Cleaning Hatch available on models  
80, 150kl, 200G, 300
- ⑧ Side cleaning hatch  
(150KL only)

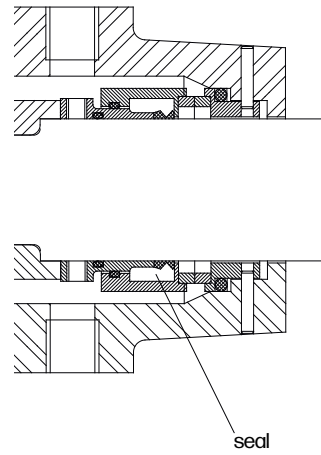


# RC / RCR Range

## Gland packing version



## Mechanical seal version



---

## RC /RCR Range Impellers & Variants

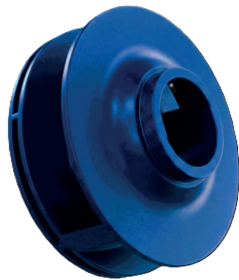
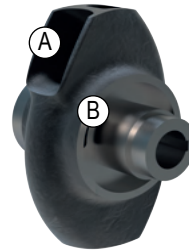


### Double-channel impeller with balancing

*défault*

Ⓐ

Ⓑ



### Closed vane impeller

*Only upon request*

Impellers are available by default in Rudax or GS60 Ductile iron.  
Other materials available on request (Aluminium, 316L Stainless Steel, Titanium, etc.).

---

## RCN Range

Verticalized RC for dry dock or submerged use.  
Perforated or bar strainer.



---

## CAL Range

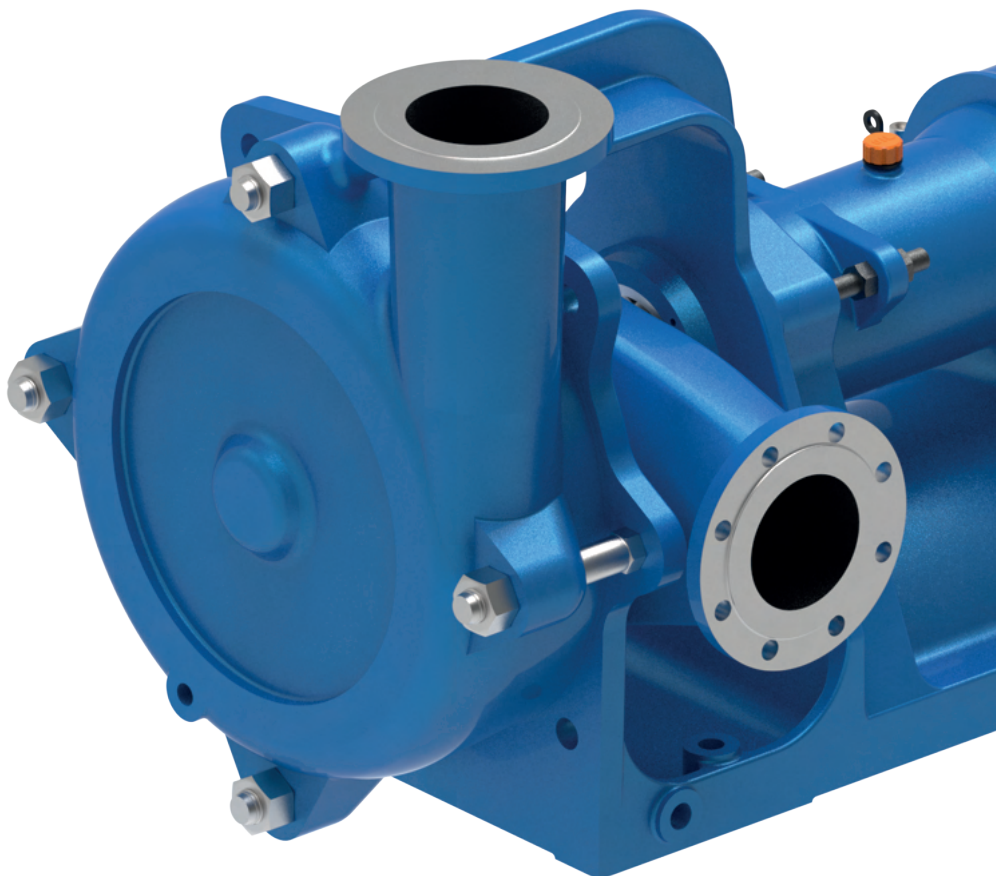
### **Horizontal centrifugal pump with back suction.**

The CAL pumps were developed in the 1950s to provide pumping solutions in the harshest environments.

Originally used in mining and metallurgical plants in Liège and Charleroi (Belgium), they now handle the most demanding liquids from quarries to paper pulp.

This special model is particularly rigid and "self-adjusting" thanks to its inverted geometry.

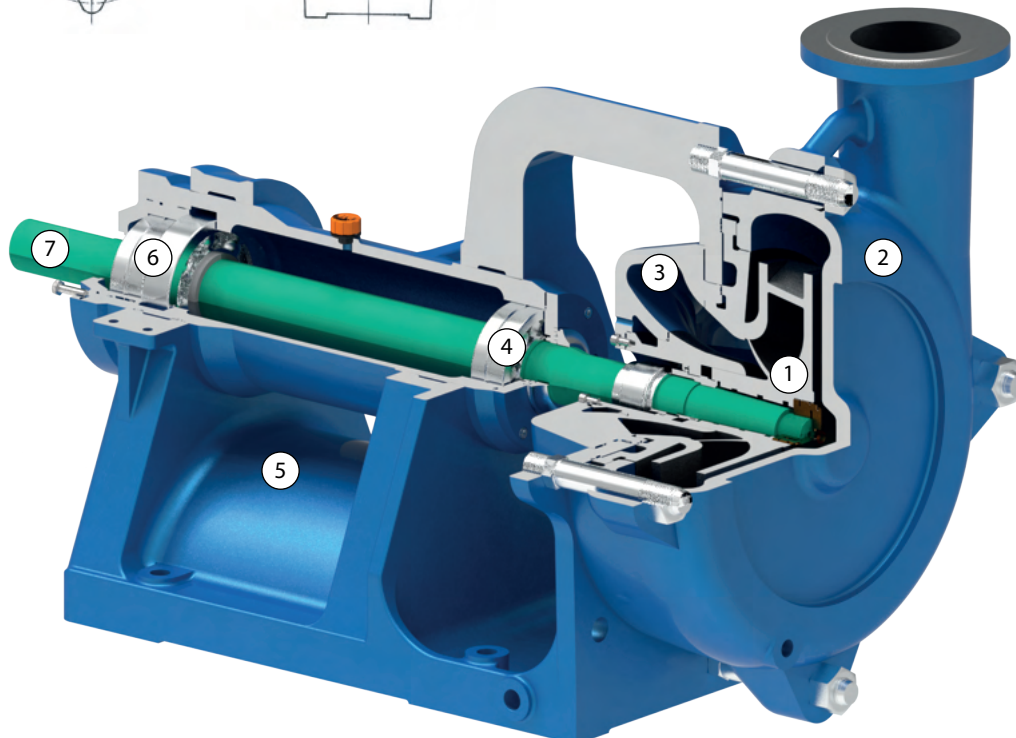
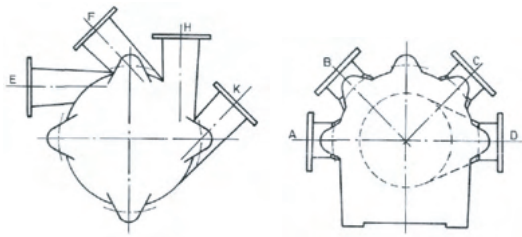
Additional piping options are available depending on your installation's location.



# CAL Range - Best Seller

## CAL 150

- ① Wide channel impeler
  - Chromium Cast Iron «Rudax»  
*Alloy 3.5/30 -  
iron 50/54 RC 400 Brinell*
- ② Volute
  - 4 Positions
  - Easy cleaning
- ③ Aspiration
  - 4 Positions
  - Enhanced rigidity
- ④ Double Bearing
- ⑤ Massive Cast iron bearing housing
- ⑥ Triple rear bearing
- ⑦ Coupling:
  - Pulley/v-belt
  - Direct coupling via flex-ring

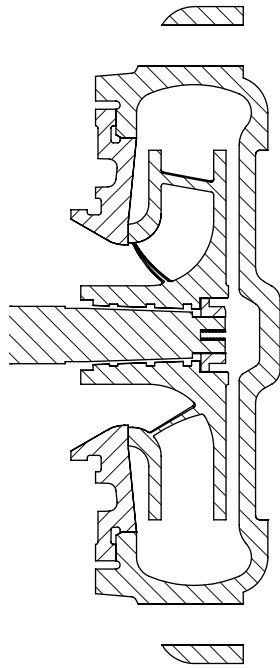


---

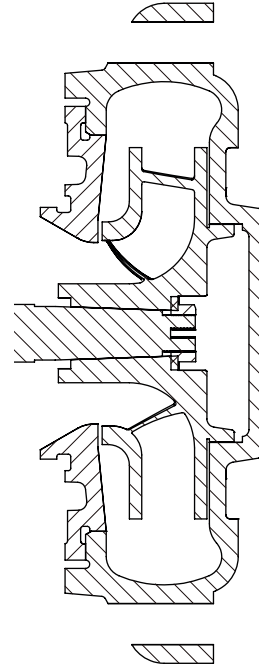
## CAL Range - Variants

### Option 1:

Possibility of an extra support point via a wear ring.



Without additional wear ring



With additional wear ring

### Option 2 :

Possibility of an inspection cover.



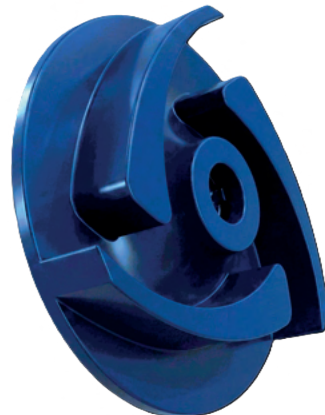
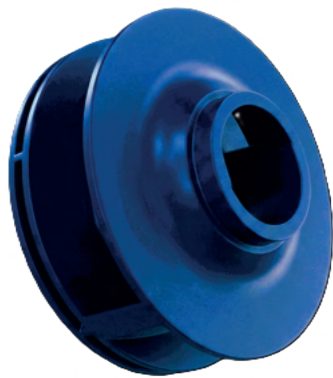
---

## CAL Range - Impeller Types

**Open 2 or 3-vane impeller**

**Closed wide-channel 2, 3, or 4-vane impeller.**

**Open and closed impellers for pastes**





▲  
**Antwerp**

▲  
**Maastricht**

▲  
**Köln**

▲  
**Brussels**

**HERSTAL**

**LIÈGE**

▲  
**Paris**



# Ateliers de Construction de Herstal

En Hayeneux ,148  
B4040 Herstal Belgium  
+32 (0) 4 264 08 40  
info-pompe@ac-herstal.com

This brochure is a general presentation and is by no means contractual.  
All information is subject to change without notice.

## Made in Belgium



**EU  
Product**

